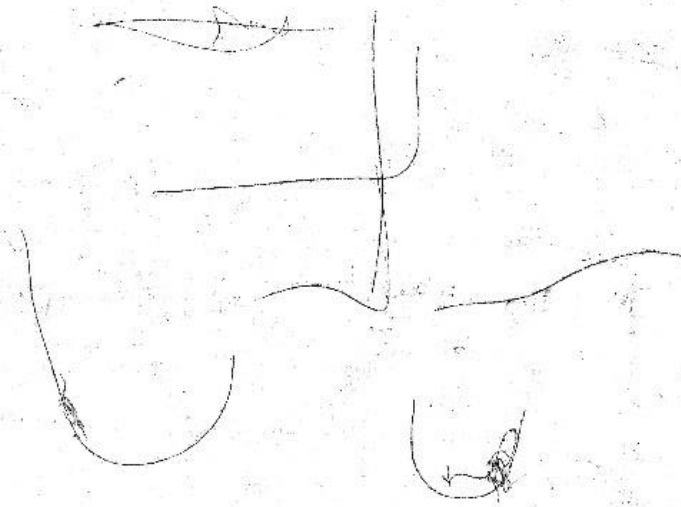


# **EXCERPTS FROM WILDERWALL**

I FEEL LIKE  
SHIMP HATE  
ALL THE  
PRAVINS



BEATINGS just a  
snow blizzard

HOW HOW MUCH  
YOU MAKE  
THE STRUGGLE  
~~TO~~ MAKE  
YES YOU  
YES YOU MAKE  
TOO?

SPANISH  
PULCAN



dreamt of  
Epp cartoons  
Last night  
menthol we have a  
task for you  
some R/S  
wants to talk  
me + you



the body  
to no  
how

not  
partly

plants  
needles  
hot  
work



SANTA PILLOCK

the floor

collage

and of or MOUNTAIN

TRAMM

EVERY A MOUSE

EVERY THING A RAT

IS THE TEAM

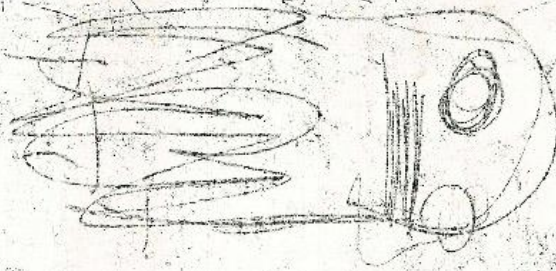
COMMON RAT

RARE MOUSE

CREAM EGGS



FROM THE  
ULTIMATE X + D A  
FATHER'S BEST





OUR  
FOUR  
BEAR  
ICELAND

WORLDWIDE

the egg ~~CRACKED~~ out the sea

nothing is breakable

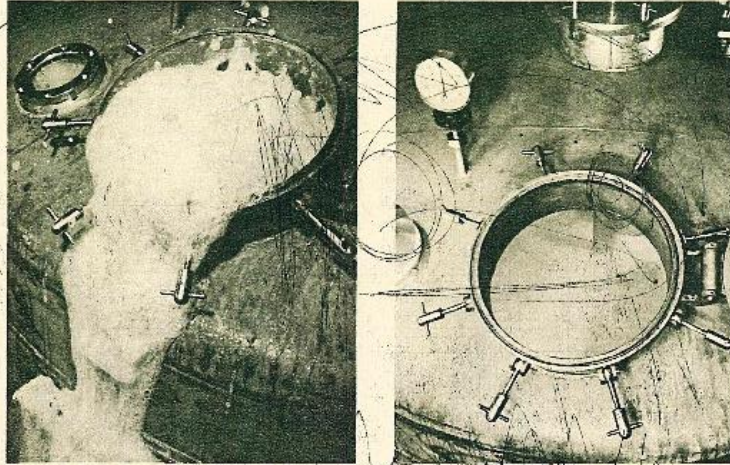
and a message

All units are being measured by EDF Energy Customer & Reg. No. 0233807  
where National Grid Metering is required. Please contact 0800 011 111 for  
further information and advice. The response time for your supply  
disruption for all EDF Energy supply contracts are with EDF Energy Customer & Reg.

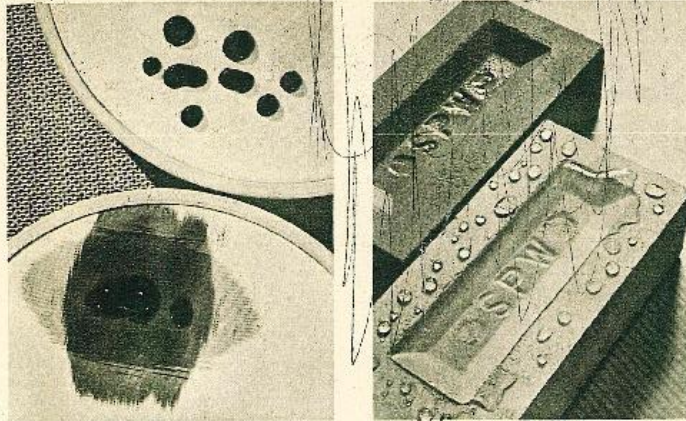
ENHANCED PROTECTION

[edfenergy.com](http://edfenergy.com)

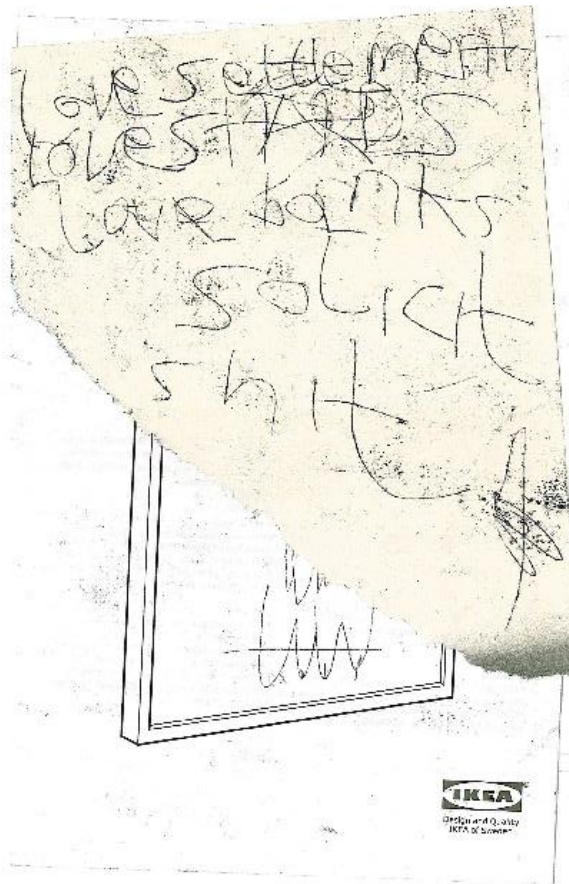




4. The foaming that accompanies a yeast fermentation has been suppressed by the addition of a few parts per million of silicone anti-foaming agent. (Courtesy of I.C.I. Ltd.)

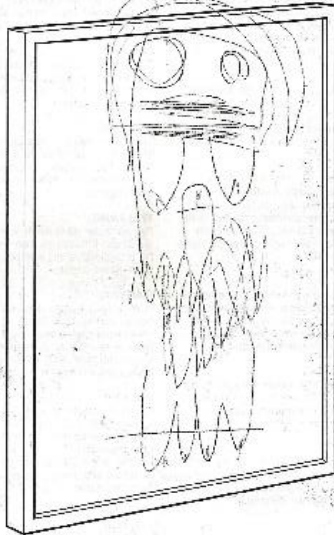


5. (left) Ink spilt on acetate rayon. The lower sample is untreated and easily stained; the upper specimen was treated with silicone and displays a high degree of repellency to water-borne stains. (Right) The untreated brick on the left has absorbed large quantities of water. The brick on the right has been treated with a silicone resin and displays a high degree of repellency like the treated rayon. (Courtesy of I.C.I. Ltd.)



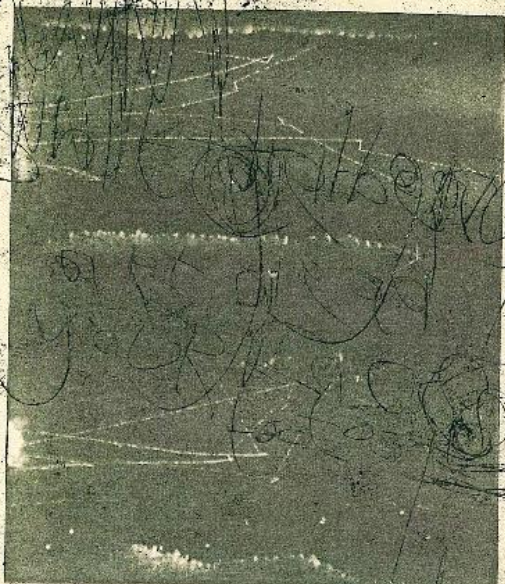


EN ROBOT  
**STRÖMBY**





Most bubbles sculpture is the ridge of bubble sculpture men look at it with the coats



16. Stereoscopic photographs showing the process of decay of  $\pi$  (pi) and  $\mu$  (mu) mesons. The  $\pi$  (pi) mesons enter the chamber from the left; the  $\mu$  (mu) mesons are shown by the short tracks of slightly higher bubble density.

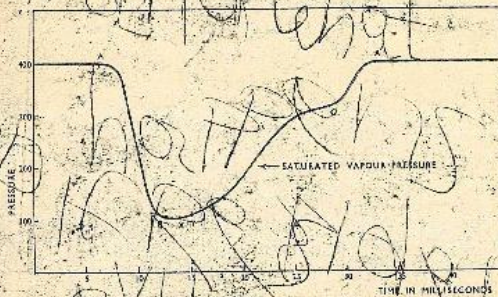


Fig. 5. Order of events in a bubble chamber cycle.

After about 10 milliseconds the "wall" bubbles will have grown and the recompression should be applied at  $A'$ .  $A'$  represents the moment at which the initial pressure is regained and in principle the chamber is ready for operation again. The time interval  $CA'$  will depend on the speed of the recompression mechanism. In practice it may be necessary to wait for a short time until  $A''$  before recycling - but since the whole sequence may only have taken about 25 milliseconds it should, therefore, be possible to run the chamber at about 40 times per second.

Two further points  $X$  and  $Y$  are shown on the time graph. If a particle or group of particles was allowed to enter the chamber at  $X$ , then the lamp flash would be triggered off at  $Y$  after sufficient time (about 1 millisecond) had been given for the bubbles to grow to the requisite size for photography. Naturally in practice a group of particles may not all reach the chamber at the same moment and the point  $X$  must be regarded as representing the region of time (when the chamber is used with an accelerator this 'region' will be the width of the output pulse).

USES OF THE BUBBLE CHAMBER

It has been shown that, in principle, the bubble chamber can be

C



Dear Canada water,

This will be my forever  
in a week next week

The difference? What the difference



or a <sup>side support</sup> of foot  
ball ~~trans~~ <sup>ply</sup> in  
city - pot

gytha g a r o s is westham

ARE THE X HALF with

I taste brown

dough

again

metal



lets @ of the  
city. army  
napolchote  
hakkoo  
black  
black  
populst  
what?

god's now we all what changed work  
are god

FOR SCULPTING

WEAT THEROBER  
RECYCL ROBOT

ALLUCAM

EMBLANKED

BREAKFAST

SNOW X S

YOU EGG

A ALLIN

AS VENISE

SLIPPED

ALL PRO

NNDER

ALL PEOPLE

THE THAM

EN TABI  
CRHINO

SPORTS  
999

SPORTS  
999



ACQUIRER  
MATRIX WONTYU U

RAVAJE MY PASSAGE

BOREK

BOREK

BOREK

BOREK

CORSET

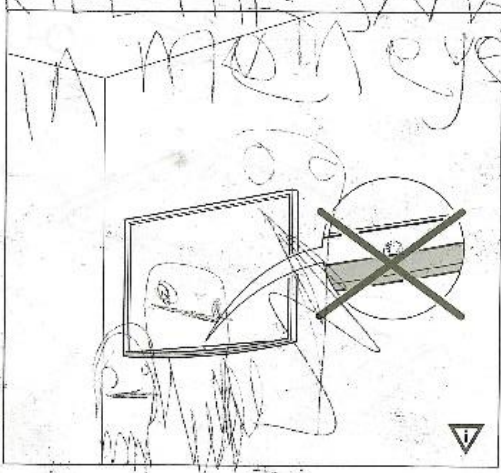
BOREK



WILHELM MARISSA  
1980

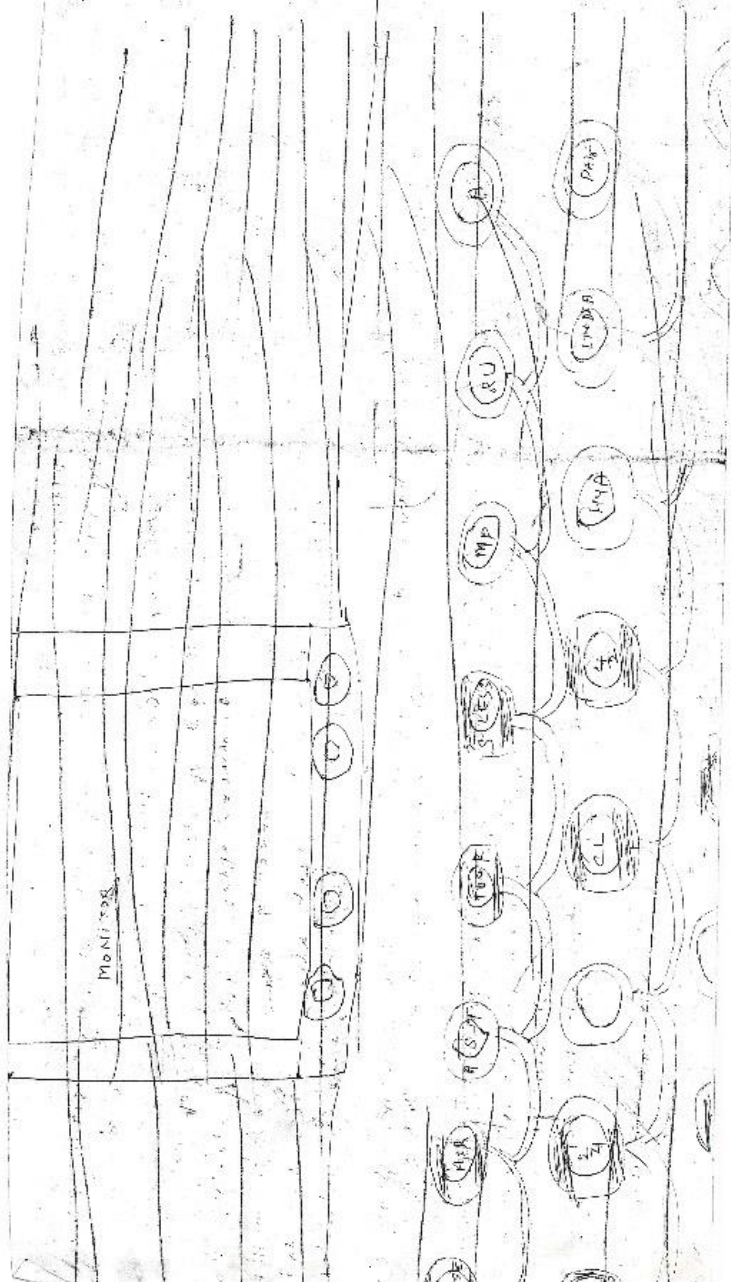
FUCKER  
EGG POPE

KILL THE JAMA  
IN MY EYE

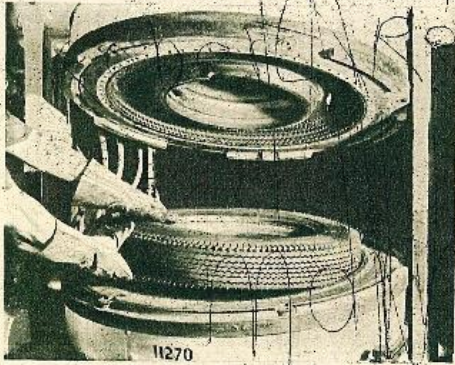
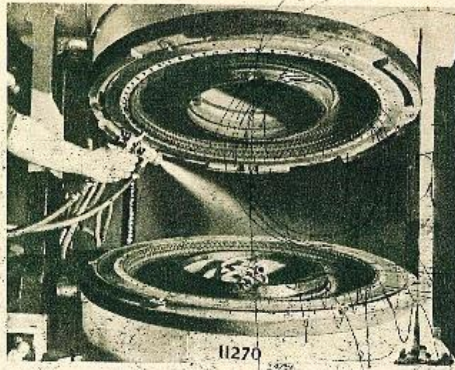


MINNESOTA

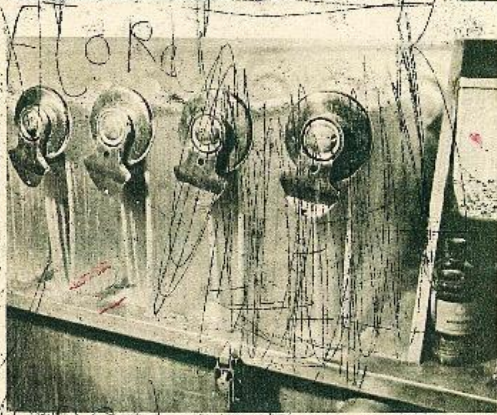
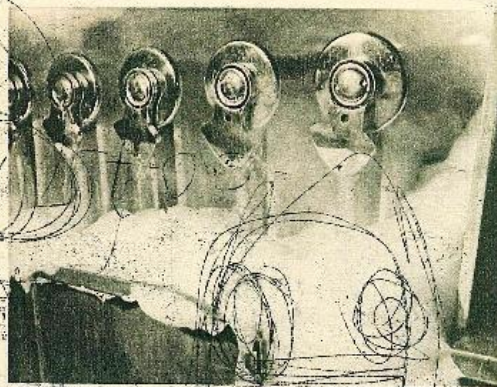
Lady VICTORIAS  
Shirley becomes  
a WITCHIE SUIT  
Lyke this barge







2. Silicone release agents are widely used in the rubber and plastics industries. The upper photograph shows a mould being sprayed with silicone, and the lower, a rubber tyre being removed from the mould. A silicone concentration of between 0.5 and 2 per cent is normally used. (Courtesy of India Tyre and Rubber Co. Ltd.)

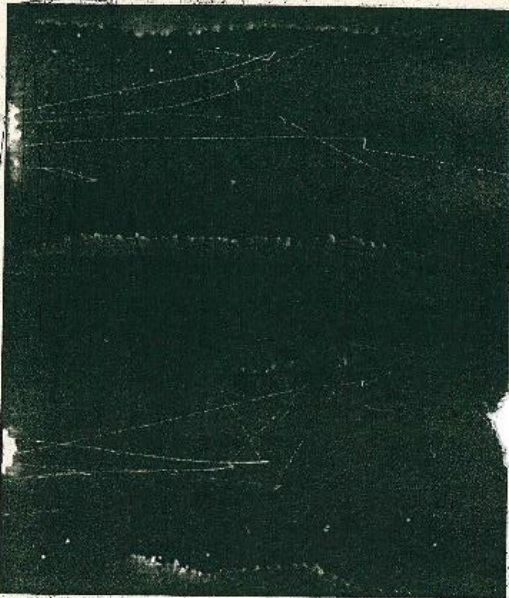


3. The foaming occasioned during a hank dyeing process, shown above, was eliminated by the addition of 0.5 ounce of silicone in 100 gallons of dye solution, as illustrated in the lower photograph. (Courtesy of Weldon and Wilkinson Ltd.)

the material is set

BALD  
30  
60  
90





16. Stereoscopic photographs showing the process of decay of  $\pi^0$  and  $\mu$  (mu) mesons. The  $\pi$  ( $\pi^0$ ) mesons enter the chamber from the left; the  $\mu$  ( $\mu^+$ ) mesons are shown by the short tracks of slightly higher bubble density.

*[Handwritten scribbles and markings]*

valley

then, a dwarf  
of melody  
a celestial harmony  
perfection  
below  
thus, my debut  
in the under  
toy

Candle

111  
Wedding POERS  
SAID PRINCESS WILLIAM  
RESPONSE AREA  
GIRLS OUTLAUD.



ALL WORKS  
ERKEMBODE  
EVERYWHEN  
(THE SCHOOL OF)